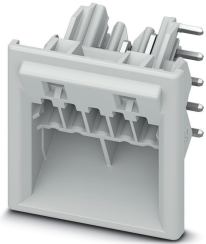


## Feed-through header - ICC25-H/5R3,5-7035 - 1084017

Please be informed that the data shown in this PDF Document is generated from our Online Catalog. Please find the complete data in the user's documentation. Our General Terms of Use for Downloads are valid (<http://phoenixcontact.com/download>)



PCB header, color: light gray, nominal current: 8 A, rated voltage (III/2): 150 V, contact surface: Tin, type of contact: Male connector, number of potentials: 5, Number of rows: 1, Number of positions per row: 5, number of connections: 5, product range: ICC..-H/..R3,5, pitch: 3.5 mm, mounting: Wave soldering, pin layout: Linear pinning, solder pin [P]: 2.8 mm, Pin connector pattern alignment: Standard, Locking: Snap-in locking, mounting: without, type of packaging: Box packaging, Product with pin output on right side

### Your advantages

- ✓ Variable coding, for reliable protection against incorrect connection
- ✓ Designed for integration into the wave soldering process
- ✓ Easy and fast push-in mounting of assembled printed-circuit boards, thanks to stable guide rails
- ✓ Quick and easily coded when initially connecting the connector and header



### Key Commercial Data

Packing unit	1 pc
Minimum order quantity	50 pc
GTIN	 4 0 5 5 6 2 6 8 1 9 2 5 9
GTIN	4055626819259
Custom tariff number	85366930
Country of origin	Poland

### Technical data

#### Item properties

Brief article description	Feed-through header
Type of contact	Male connector
Range of articles	ICC..-H/..R3,5
Pitch	3.5 mm
Number of positions	5

# Feed-through header - ICC25-H/5R3,5-7035 - 1084017

## Technical data

### Item properties

Mounting type	Wave soldering
Pin layout	Linear pinning
Number of levels	1
Number of connections	5
Number of potentials	5

### Electrical parameters

Nominal current	8 A
Rated voltage (III/3)	150 V
Rated voltage (III/2)	150 V
Rated voltage (II/2)	250 V
Rated surge voltage (III/3)	2.5 kV
Rated surge voltage (III/2)	2.5 kV
Rated surge voltage (II/2)	2.5 kV

### Material data - contact

Note	WEEE/RoHS-compliant, free of whiskers according to IEC 60068-2-82/ JEDEC JESD 201
Contact material	Cu alloy
Surface characteristics	Tin-plated
Metal surface terminal point (top layer)	Tin (2 - 4 µm Sn)
Metal surface terminal point (middle layer)	Nickel (1.3 - 3 µm Ni)
Metal surface contact area (top layer)	Tin (2 - 4 µm Sn)
Metal surface contact area (middle layer)	Nickel (1.3 - 3 µm Ni)
Metal surface soldering area (top layer)	Tin (2 - 4 µm Sn)
Metal surface soldering area (middle layer)	Nickel (1.3 - 3 µm Ni)

### Material data - housing

Housing color	light gray (7035)
Insulating material	PA
Insulating material group	I
CTI according to IEC 60112	600
Flammability rating according to UL 94	V0
Glow wire flammability index GWFI according to EN 60695-2-12	850
Glow wire ignition temperature GWIT according to EN 60695-2-13	775
Temperature for the ball pressure test according to EN 60695-10-2	125 °C

### Dimensions for the product

Caption	Schematische Abbildung - weitere Details siehe Produktfamilienzeichnung im Download Center
---------	--

# Feed-through header - ICC25-H/5R3,5-7035 - 1084017

## Technical data

### Dimensions for the product

Length [ l ]	20.22 mm
Width [ w ]	25 mm
Height [ h ]	22.4 mm
Pitch	3.5 mm
Solder pin [P]	2.8 mm
Pin dimensions	0.8 x 0.8 mm

### Dimensions for PCB design

Hole diameter	1.2 mm
---------------	--------

### Packaging information

Type of packaging	Box packaging
Pieces per package	50
Denomination packing units	Pcs.
Outer packaging type	Carton

### General product information

Type of note	Assembly instruction:
Note	Refer to the data sheet for the range in the download area.

### Ambient conditions

Ambient temperature (storage/transport)	-40 °C ... 55 °C
Ambient temperature (assembly)	-5 °C ... 100 °C
Ambient temperature (operation)	-40 °C ... 105 °C (dependent on the derating curve)
Relative humidity (storage/transport)	80 %

### Air clearances and creepage distances

### Current carrying capacity / derating curves

Caption	Type: ICC20(25)-PSC1,5/...-3,5-... with ICC20(25)-H/...L(R)3,5-...
---------	--

### Mechanical test group (A)

Test specification	IEC 61984
Visual inspection	IEC 60512-1-1:2002-02
Dimension check	IEC 60512-1-2:2002-02
Resistance of inscriptions	IEC 60068-2-70:1995-12
Insertion and withdrawal force	IEC 60512-13-2:2006-02
No. of cycles	25
Insertion strength per pos. approx.	7.2 N
Withdraw strength per pos. approx.	5.4 N
Polarization and coding	IEC 60512-13-5:2006-02

## Feed-through header - ICC25-H/5R3,5-7035 - 1084017

### Technical data

#### Mechanical test group (A)

Contact holder in insert	IEC 60512-15-1:2008-05
Test force per pos.	20 N

#### Life cycle test group (B)

Specification	IEC 60512-9-1:2010-03
Contact resistance R <sub>1</sub>	1.76 mΩ
Insertion/withdrawal cycles	25
Contact resistance R <sub>2</sub>	1.82 mΩ
Impulse withstand voltage at sea level	2.95 kV

#### Thermal tests (C)

Specification	IEC 60512-5-1:2002-02
Number of positions	5

#### Climatic test group (D)

Specification	ISO 6988:1985-02
Cold stress	-40 °C/2 h
Thermal stress	100 °C/168 h
Corrosive stress	0.2 dm <sup>3</sup> SO <sub>2</sub> on 300 dm <sup>3</sup> /40 °C/1 cycle
Impulse withstand voltage at sea level	2.95 kV
Power-frequency withstand voltage	1.54 kV

#### Degree of protection test group (E)

Specification	IEC 61984:2008-10
Result, degree of protection, IP code	Finger safety with IP20 test finger

#### Vibration test

Specification	IEC 60068-2-6:2007-12
Frequency	10 - 150 - 10 Hz
Sweep speed	1 octave/min
Amplitude	0.35 mm (10 - 60.1 Hz)
Acceleration	5g (60.1 - 150 Hz)
Test duration per axis	2.5 h
Test directions	X-, Y- and Z-axis

#### Standards and Regulations

Flammability rating according to UL 94	V0
--	----

#### Environmental Product Compliance

China RoHS	Environmentally friendly use period: unlimited = EFUP-e
------------	---

# Feed-through header - ICC25-H/5R3,5-7035 - 1084017

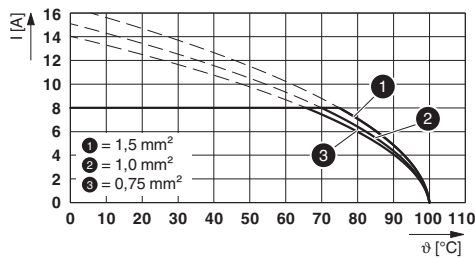
## Technical data

### Environmental Product Compliance

	No hazardous substances above threshold values
--	--

## Drawings

Diagram



Type: ICC20(25)-PSC1,5/...-3,5-... with ICC20(25)-H/...L(R)3,5-...

## Classifications

eCl@ss

eCl@ss 10.0.1	27440402
eCl@ss 11.0	27460201
eCl@ss 9.0	27440402

## Approvals

Approvals

Approvals

EAC / cULus Recognized

Ex Approvals

Approval details

EAC		B.01687
-----	--	---------

# Feed-through header - ICC25-H/5R3,5-7035 - 1084017

## Approvals

cULus Recognized		<a href="http://database.ul.com/cgi-bin/XYV/template/LISEXT/1FRAME/index.htm">http://database.ul.com/cgi-bin/XYV/template/LISEXT/1FRAME/index.htm</a>	E60425-20181123
	B	C	
Nominal voltage UN	300 V	50 V	
Nominal current IN	8 A	8 A	

## Accessories

### Additional products

Printed-circuit board connector - ICC25-PSC1,5/5-3,5-AA-7035 - 1084024



PCB connector, nominal cross section: 1.5 mm<sup>2</sup>, color: light gray, rated voltage (III/2): 150 V, contact surface: Tin, type of contact: Female connector, number of potentials: 5, Number of rows: 1, Number of positions per row: 5, number of connections: 5, product range: ICC...-PSC1,5/...-3,5, pitch: 3.5 mm, connection method: Screw connection with tension sleeve, screw head form: L Slotted, conductor/PCB connection direction: 0 °, Locking clip: - Locking clip, Locking: without, mounting: without, type of packaging: packed in cardboard